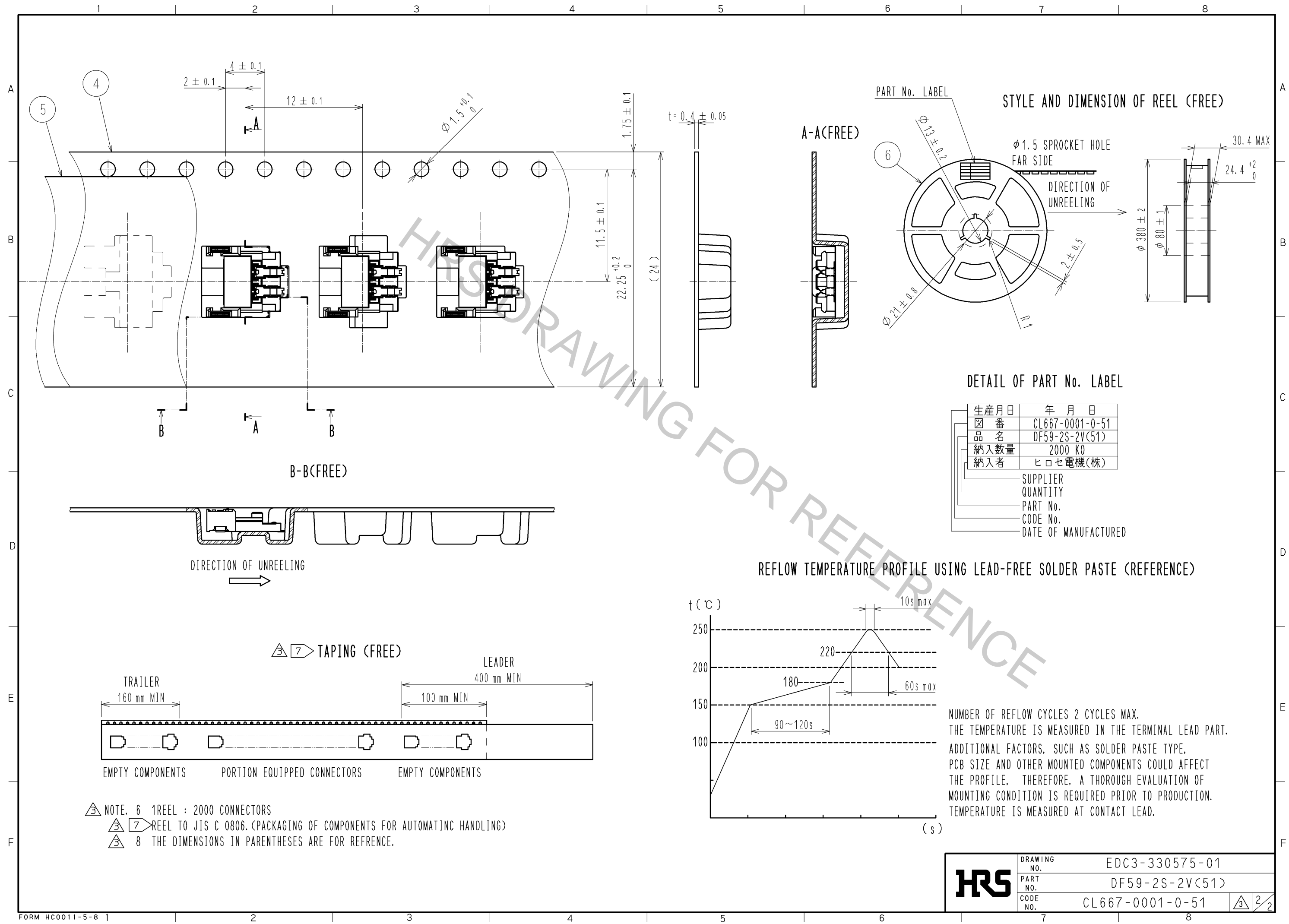


- NOTE1. LEAD CO-PLANARITY SHALL BE 0.1mm MAX.
 2. () IS REFERENCE DIMENSION.
 ③ MATING DF59-2P-2C, DF59-2P-2SP ARE APPLIED.
 4. REFER TO THE DF59 SERIES MATING/UNMATING OPERATION INSTRUCTION MANUAL(ETAD-H0496) FOR THE OPERATING OF THE PRODUCT.
 ⑤ UL(FILE NO. E52653).
 C-UL(FILE NO. E52653) APPROVED PRODUCT.

		6	PS	REEL , BLACK
		5	POLYESTER	CLEAR(COVER TAPE)
		4	PS	CLEAR(EMBOSSSED CARRIER TAPE)
		3	PHOSPHOR BRONZE	SURFACE : TIN PLATING 1μm MIN UNDER PLATING : NICKEL PLATING 0.5μm MIN
2	PHOSPHOR BRONZE	CONTACT AREA : GOLD PLATING 0.2μm MIN LEAD AREA : TIN PLATING 1μm MIN UNDER PLATING : NICKEL PLATING 0.5μm MIN		
1	LCP	UL94V-0,BEIGE		
NO.	MATERIAL	FINISH	REMARKS	
UNITS mm		⊙	SCALE 5 : 1	COUNT 5
DESCRIPTION OF REVISIONS DIS-H-006791		DESIGNED ST. SATO	CHECKED HK. UMEHARA	DATE 12.04.13
APPROVED : KI. AKIYAMA		10.10.20		DRAWING NO. EDC3-330575-01
CHECKED : OM. MIYAMOTO		10.10.20		PART NO. DF59-2S-2V(51)
DESIGNED : KT. ISHII		10.10.20		CODE NO. CL667-0001-0-51
DRAWN : KT. ISHII		10.10.20		⑤ 1/2



HRS	DRAWING NO.	EDC3-330575-01
	PART NO.	DF59-2S-2V(51)
	CODE NO.	CL667-0001-0-51