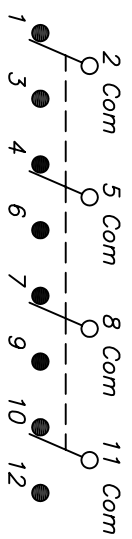


RECOMMENDED P.C.B. LAYOUT
SCALE 1X



CIRCUIT: 4PDT

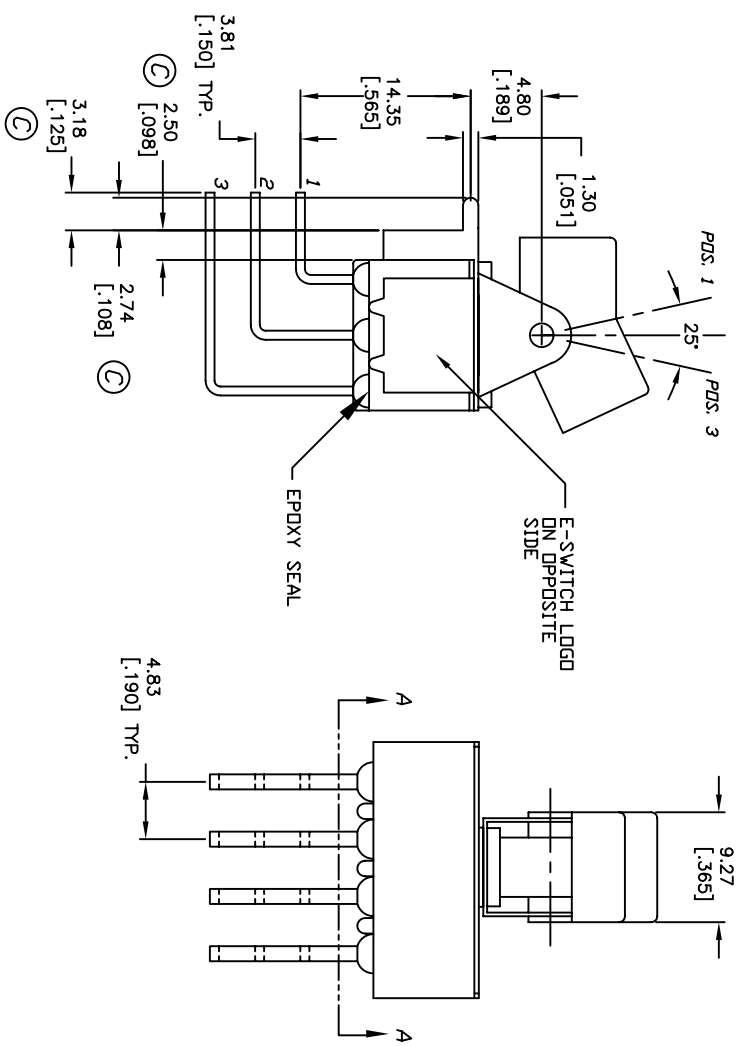
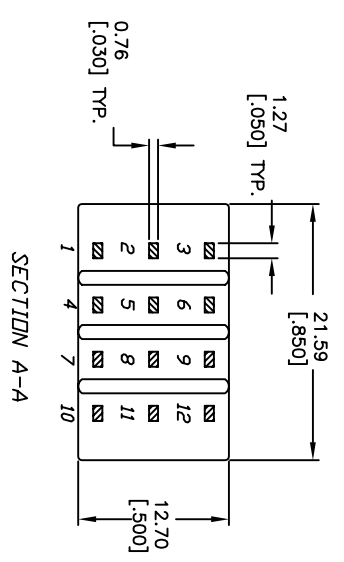
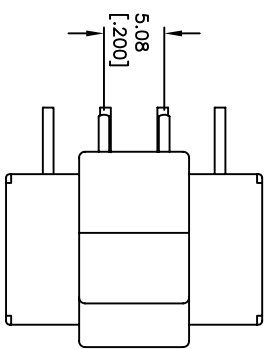
SWITCH FUNCTION		
PDS. 1	PDS. 2	PDS. 3
DN	NONE	DN
2-3,5-6 8-9,11-12	DPEN	2-1, 5-4 8,7 11-10

NOTES:

1. ALL DIMENSIONS IN MM [INCH]
2. GENERAL TOLERANCE: X.X=±0.4
X.XX=±0.25
3. TERM. NOS. FOR REF. ONLY
4. RATING: 5A @120VAC or 28VDC; 2A @250VAC.
5. CONTACT MATERIAL: Copper Alloy w/Silver Plating.
6. ELECTRICAL LIFE: 50,000 make-and-break cycles at full load.
7. INSULATION RESISTANCE: 1,000M ohm min.
8. DIELECTRIC STRENGTH: 1,000 V RMS @sea level.
9. OPERATING TEMP.: -30°C to 85°C
10. 2002/95/EC (ROHS) COMPLIANT

D	15452	DIM TD 4.80 FROM 5.99	10/25/05	PH
C	11550	REVISED	7/1/01	CB
REV.	ECN NO.	DESCRIPTION	DATE	CHKD

TITLE		300 4P-1 J1 (BLK.) M7 Q E	
SCALE	DATE	DR	DWG
1.5:1	6/25/01	CB	T346004
E-SWITCH®		REV	D



THE INFORMATION CONTAINED IN THIS DOCUMENT IS PROPRIETARY TO E-SWITCH AND IS NOT TO BE COPIED OR TRANSFERRED