

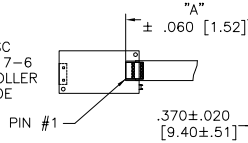
OGA DIAGONAL: 22.49 [571.22]  
 VA DIAGONAL: 21.78 [553.26]  
 PA DIAGONAL: 20.53 [521.37]

US NUMBER	TYPE	DIM "A" (TOTAL GLASS TO CONNECTOR)	A/G FINISH	PROD SPEC
98-0003-3807-3	SER	8.00" [203.20]	WC100	34523
98-0003-4003-8	USB R	8.00" [203.20]	WC100	34523
98-0003-4004-6	FFC	8.00" [203.20]	WC100	34523

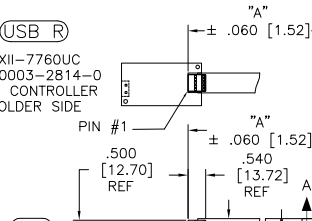


ESD CLAMSHELL CASE IS USED WITH ALL NOV, USB AND SER TERMINATIONS.

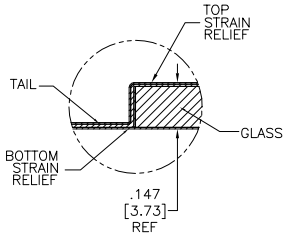
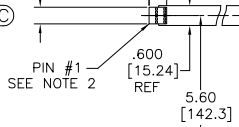
**(SER)**  
 EXII-7720SC  
 98-0003-2217-6  
 SERIAL CONTROLLER  
 SOLDER SIDE



**(USB R)**  
 EXII-7760UC  
 98-0003-2814-0  
 USB CONTROLLER  
 SOLDER SIDE



**(FFC)**



SECTION A-A  
 SCALE: NONE

.147±.020 [3.73±.51]  
 TOTAL THICKNESS  
 OF GLASS, CABLE  
 AND STRAIN RELIEF

NOTES:

1. WEIGHT OF GLASS IN GRAMS: 1119 ±10%
2. NICOMATIC HOUSING P/N: 0L05  
 NICOMATIC RECEPTACLES (PINS) MATTE TIN PLATED P/N: 14106-12  
 HOUSING ORIENTED WITH LATCH DOWN

PINOUT	
1	LR
2	LL
3	SHLD
4	UL
5	UR

UNITS INCHES [MM]

TOLERANCES UNLESS OTHERWISE SPECIFIED

.X ±  
 .XX ±.03 [.76]  
 .XXX ±.015 [.38]  
 ANGLES ±1°

THIRD ANGLE PROJECTION



DO NOT SCALE DRAWING

SCALE 1 = 1

**3M** 3M TOUCH SYSTEMS  
 METHUEN, MA  
 USA

© COPYRIGHT 2004  
 THIS DOCUMENT IS COPYRIGHTED PROPERTY OF THE  
 3M COMPANY AND MAY NOT BE REPRODUCED  
 WITHOUT 3M WRITTEN PERMISSION OR USED OR  
 DISCLOSED FOR OTHER THAN 3M AUTHORIZED  
 PURPOSES.

DRAWN SB 6/1/11

SCALE 1 = 1

B	REVISE PER CO 034294	2/12	SB
A	RELEASE PER CO 033005	6/11	SB
REV	CHANGE NOTICE	DATE	DRW

TITLE  
 MARKETING DRAWING  
 SCT32NN 21.78" W

CAD FORMAT AUTOCAD SHEET 1 OF 1

SIZE C DOCUMENT NO. TSD-40327 REV B