

6

5

4

3

2

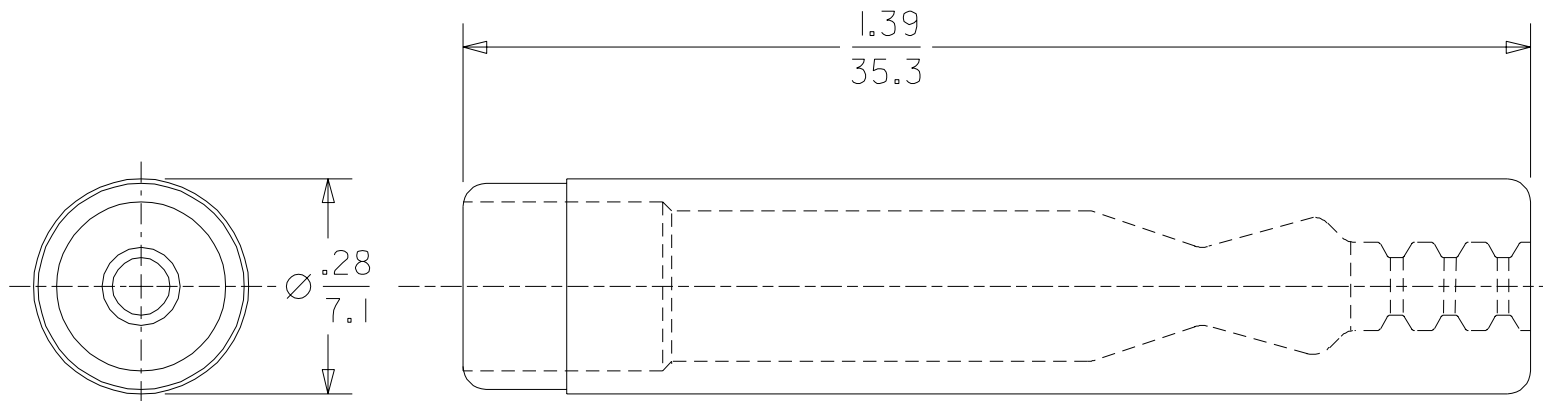
SD-19161-025

METERIAL NUMBER

ENGINEERING NUMBER

191610334

SPR-1



# SALES DRAWING

NEW RELEASE EC NO.: ETC2004-0035 DRWN: BRE 03/08/08 CHK: HEB 03/08/08 APPR: RWD 03/08/08	DESCRIPTION MAJOR CRITICAL	QUALITY SYMBOLS MAJOR $\blacktriangledown = 0$ CRITICAL $\nabla c = 0$		GENERAL TOLERANCES: (UNLESS SPECIFIED)		SCALE 4:1	DESIGN UNITS <input type="checkbox"/> mm <input checked="" type="checkbox"/> INCH	DIMENSIONS: <input type="checkbox"/> mm <input checked="" type="checkbox"/> INCH <input type="checkbox"/> mm ONLY		SHT	REV	
		4 PLACES	$\pm 0.$	$\pm.$	DRAWN BY & DATE		BRE 03/08/07		TITLE: SPLASH PROOF INSULATOR FEMALE RECEPTACLE 22-14 AWG			
		3 PLACES	$\pm 0.$	$\pm.$	CHECKED BY & DATE		HEB 03/08/07					
		2 PLACES	$\pm 0.$	$\pm .025$	APPROVED BY & DATE		RWD 03/08/07		MOLEX INCORPORATED			
1 PLACE	$\pm 0.18$	$\pm.$	ANGULAR: $\pm 1/2^\circ$		CAD FILENAME		MATERIAL NO.	DRAWING NO.				
DRAFT WHERE APPLICABLE MUST REMAIN WITHIN DIMENSIONS				19161024.DGN		SEE CHART		SD-19161-025		1 OF 1		
THIS DRAWING CONTAINS INFORMATION THAT IS PROPRIETARY TO MOLEX INCORPORATED AND SHOULD NOT BE USED WITHOUT WRITTEN PERMISSION.												

5

4

3

2

1

SIZE A