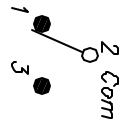


RECOMMENDED PCB LAYOUT

SCALE 2:1

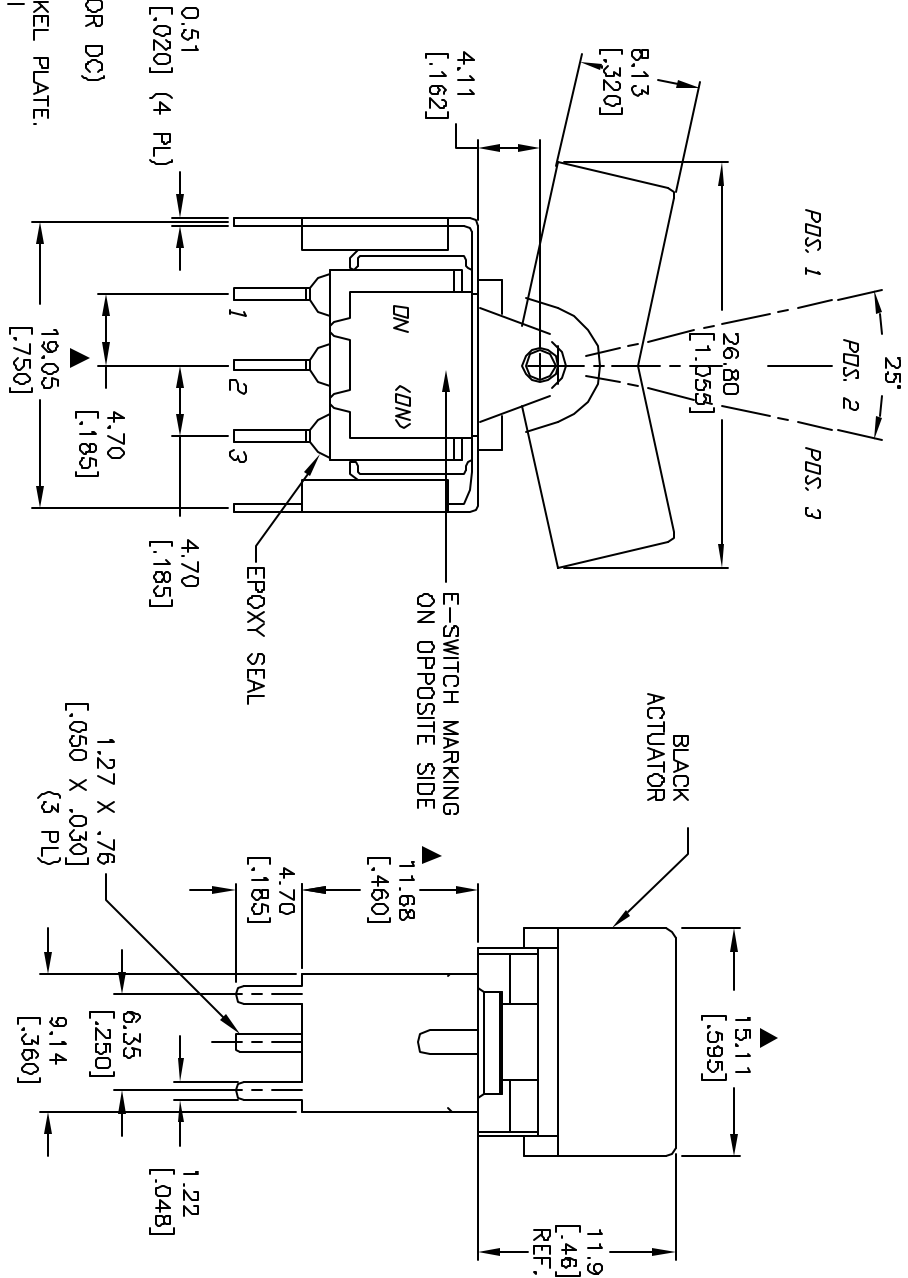


CIRCUIT: SPST

| POS. 1            | POS. 2 | POS. 3 |
|-------------------|--------|--------|
| ▲ SWITCH FUNCTION |        |        |
| ▲                 | ▲      | ▲      |
| DN                | NONE   | <DN>   |
| 2-3               | OPEN   | 2-1    |

NOTES:

1. ALL DIMENSIONS IN MM [INCH]
2. GENERAL TOLERANCE: X.X=±0.4  
X.XX=±0.25
3. TERM. NOS. FOR REF. ONLY
4. RATING: 0.4 VOLT-AMPS MAX. @20V MAX. (AC OR DC)
5. MATERIAL: FIXED TERMINAL & MOVING CONTACT  
Copper Alloy w/GOLD PLATING OVER NICKEL PLATE.
6. CONTACT RESISTANCE: 10mILLI Ohms max initial  
@2-4VDC, 100mA for AG & AU
7. ELECTRICAL LIFE: 50,000 make-and-break cycles at full load.
8. INSULATION RESISTANCE: 1,000M ohm min.
9. DIELECTRIC STRENGTH: 1000V RMS @sea level
10. OPERATING TEMP.: -30°C to 85°C
11. ▲ DENOTES CRITICAL PARAMETER.



**E-SWITCH®**

300SP2J3BLKVS4RE

| REV. | ECN No. | DESCRIPTION             | DATE   | CHKD |
|------|---------|-------------------------|--------|------|
| A    | 13274   | RELEASED FOR PRODUCTION | 7/9/03 | AR   |

| TITLE            | SCALE | DATE   | DR | DWG     | REV |
|------------------|-------|--------|----|---------|-----|
| 300SP2J3BLKVS4RE | 2:1   | 7/9/03 | AR | T312010 | A   |

THE INFORMATION CONTAINED IN THIS DOCUMENT IS PROPRIETARY TO E-SWITCH AND IS NOT TO BE COPIED OR TRANSFERRED