

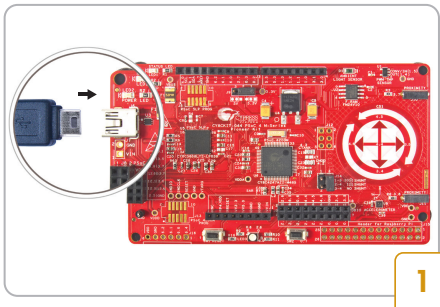
# PSoC® 4 M-SERIES PIONEER KIT



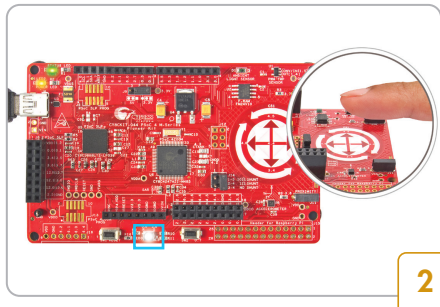
## Kit Contents:

- 1 PSoc® 4 M-Series Pioneer board
- 2 USB Standard-A to Mini-B cable
- 3 Four jumper wires (4 inches each)
- 4 Two proximity sensor wires (5 inches each)
- 5 Micrium's  $\mu$ C/Probe license card
- 6 Quick Start Guide (this document)

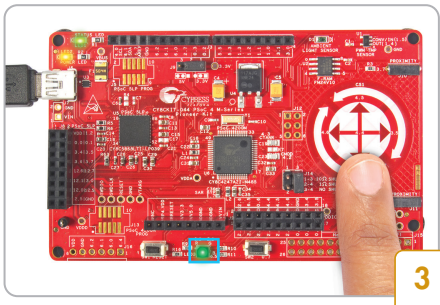




- Connect the board to your computer using the provided USB cable  
Note: This demo does not require driver installation, although this may continue in the background

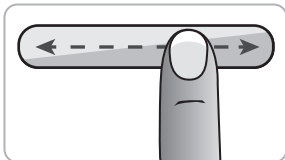


- Bring your finger closer to the CapSense® Gesture Pad to wakeup the system using proximity sensing. The on-board RGB LED will turn on with white color  
The RGB LED will turn off after 3 seconds if your finger is taken away from the Gesture Pad



- Control the RGB LED's color and brightness using the Gesture Pad  
Note: Once your finger is removed from the Gesture Pad, the PSoC 4200M device will switch to low-power mode. On wakeup using proximity sensing, the RGB LED will turn on with the last selected color

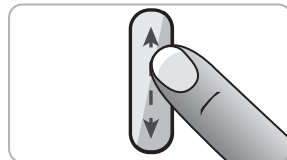
### Supported gestures



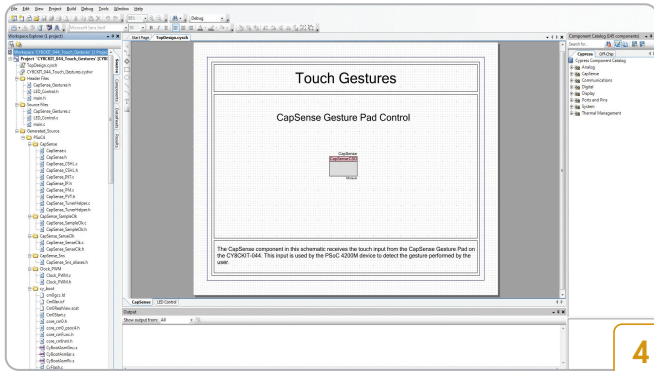
RGB color change



VIBGYOR color change



Brightness control



- Download and install the PSoC Creator IDE, PSoC 4 M-Series Pioneer Kit code examples, documents and hardware design files from [www.cypress.com/CY8CKIT-044](http://www.cypress.com/CY8CKIT-044)

### Additional Learning Resources

PSoC Creator™: [www.cypress.com/PSoCCreator](http://www.cypress.com/PSoCCreator)

AN79953 – Getting Started with PSoC 4:

[www.cypress.com/go/AN79953](http://www.cypress.com/go/AN79953)

AN73854 – PSoC 3, PSoC 4, and PSoC 5LP - Introduction To Bootloaders:

[www.cypress.com/go/AN73854](http://www.cypress.com/go/AN73854)

AN84858 – PSoC 4 Programming Using an External Microcontroller (HSSP):

[www.cypress.com/go/AN84858](http://www.cypress.com/go/AN84858)

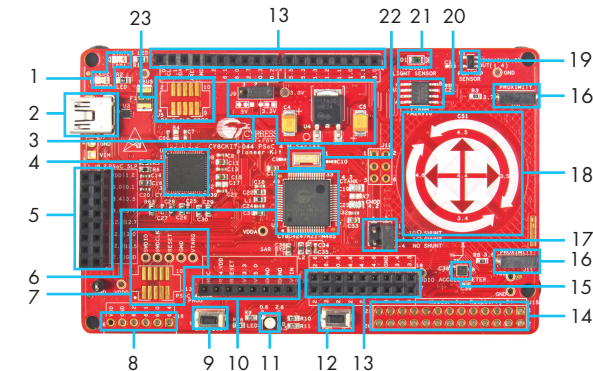
AN85951 – PSoC 4 CapSense Design Guide:

[www.cypress.com/go/AN85951](http://www.cypress.com/go/AN85951)

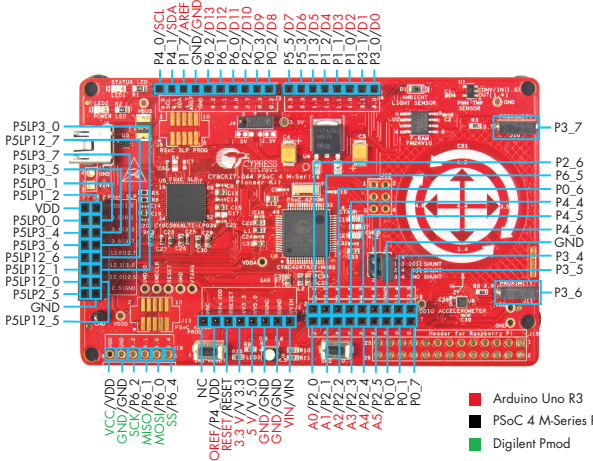
PSoC Code Examples: [www.cypress.com/?rid=101641](http://www.cypress.com/?rid=101641)

# PSoC® 4 M-SERIES PIONEER KIT

## PSoC 4 M-Series Pioneer Board Details



- 1 Power and Status LED
- 2 USB connector (J16)
- 3 System power supply jumper (J9) and LDO (3.3V)
- 4 PSoc 5LP programmer and debugger (CY8C5868LTI-P039)
- 5 PSoc 5LP I/O header (J8)
- 6 PSoc 4200M (CY8C4247AZI-M485)
- 7 PSoc 4200M program and debug header (J13)
- 8 Digilent® Pmod™ compatible I/O header (J16)
- 9 PSoc 4200M reset button
- 10 Arduino™ compatible power header (J11)
- 11 RGB LED
- 12 User button
- 13 Arduino compatible I/O headers (J2/J3/J4)
- 14 Header for Raspberry Pi (J15)
- 15 3-Axis Accelerometer
- 16 CapSense Proximity headers (J10/J11)
- 17 PSoc 4200M current measurement jumper (J14)
- 18 CapSense Gesture Pad
- 19 PWM Temperature Sensor
- 20 Cypress F-RAM 1 Mb (FM24V10-G)
- 21 Ambient Light Sensor
- 22 32.768 kHz crystal
- 23 PSoc 5LP program and debug header (J5)



- Arduino Uno R3
- PSoc 4 M-Series Pioneer Kit
- Digilent Pmod

For the latest information about this kit, visit [www.cypress.com/CY8CKIT-044](http://www.cypress.com/CY8CKIT-044)