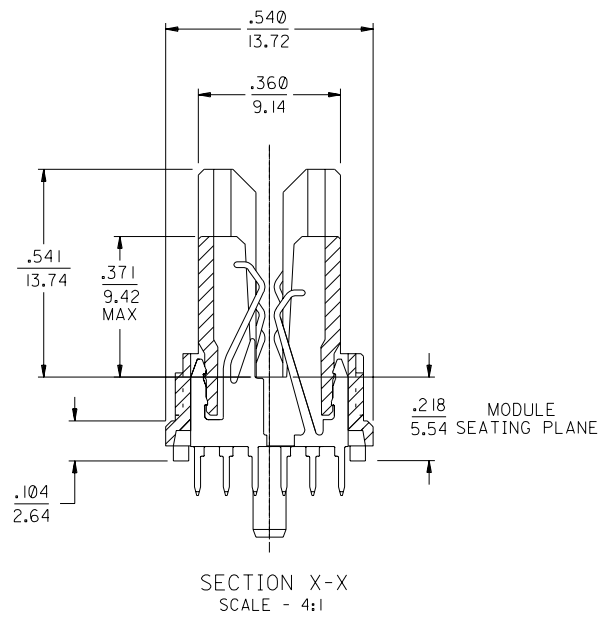
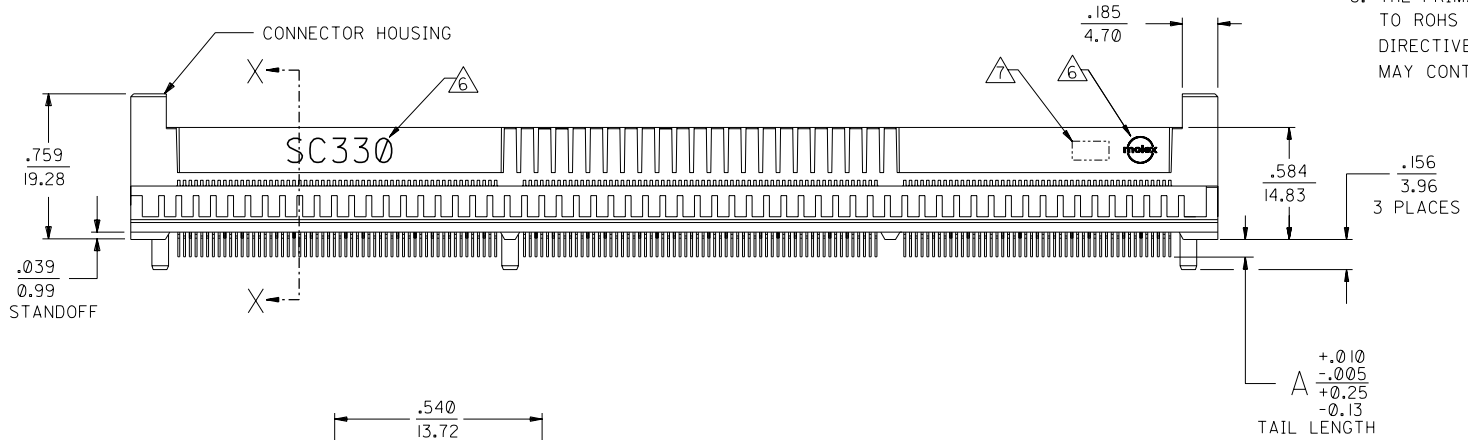
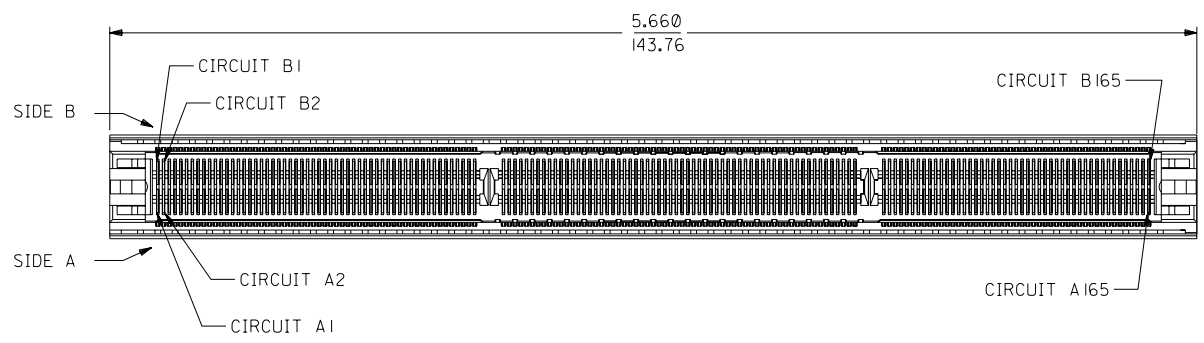


NOTES:

- MATERIALS:
HOUSING - LCP, 30% GLASS FILLED, 94-V0, BLACK.
TERMINALS - PHOSPHOR BRONZE.
- FINISH:
TERMINALS - .000030/0.00076 MINIMUM GOLD IN THE CONTACT AREA AND .000075/0.0019 MINIMUM TIN IN SOLDER TAIL AREA OVER .000050/0.0013 MINIMUM NICKEL OVERALL.
- PRODUCT SPECIFICATION PS-71109-9990 APPLIES.
- CARD SLOT ACCEPTS .062 +.007/-.005 P.C. BOARD.
- THE RECOMMENDED PLATING SPECIFICATION FOR THE MATING PC BOARD IS .000030/0.0076 MINIMUM GOLD OVER .000075/0.0019 MINIMUM NICKEL.
- "SC330" AND MOLEX LOGO SHALL APPEAR ON BOTH SIDES OF HOUSING, AND LOCATED APPROXIMATELY AS SHOWN.
- FOUR DIGIT DATE CODE (YR/WK) SHALL BE LOCATED APPROXIMATELY AS SHOWN.
- THE PRIMARY SHIPPING CARTON WILL BE LABELED "COMPLIANT TO ROHS DIRECTIVE 2002/95/EC AND ELV ANNEX II OF DIRECTIVE 2000/53/EC". CARTONS WITHOUT THIS LABEL MAY CONTAIN PRODUCT WITH LEAD.



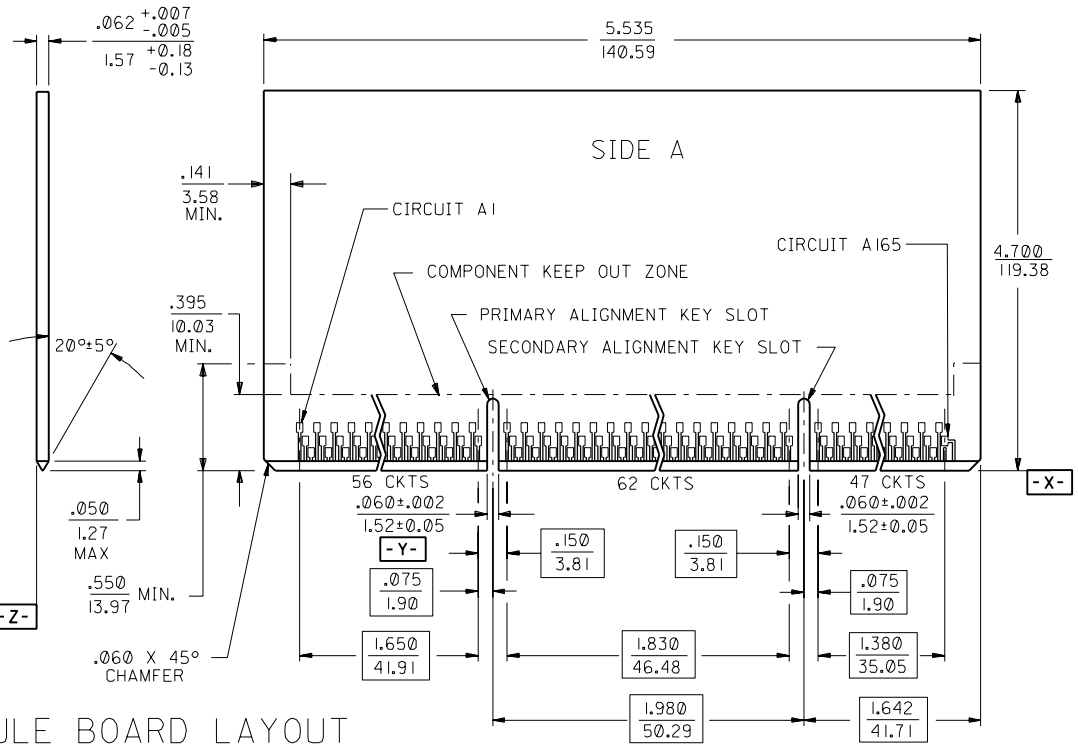
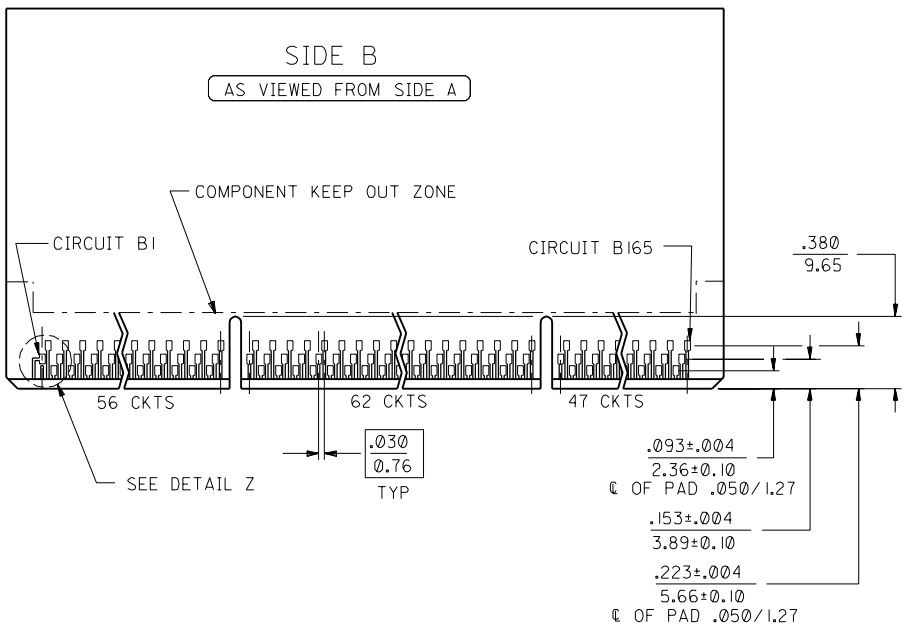
71109-2007	.140/3.56
71109-2006	.115/2.92
71109-2005	.090/2.29

MAT'L NUMBER A

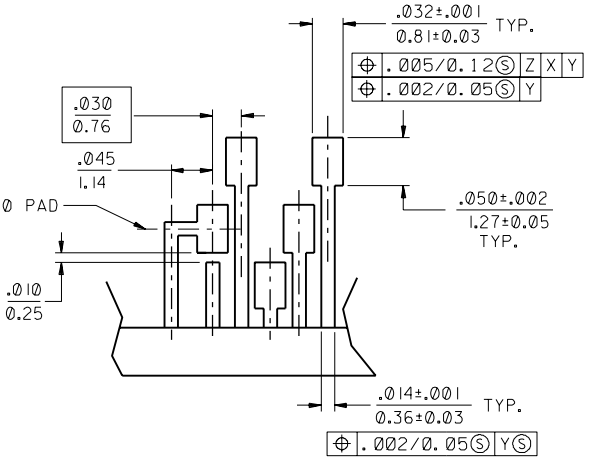
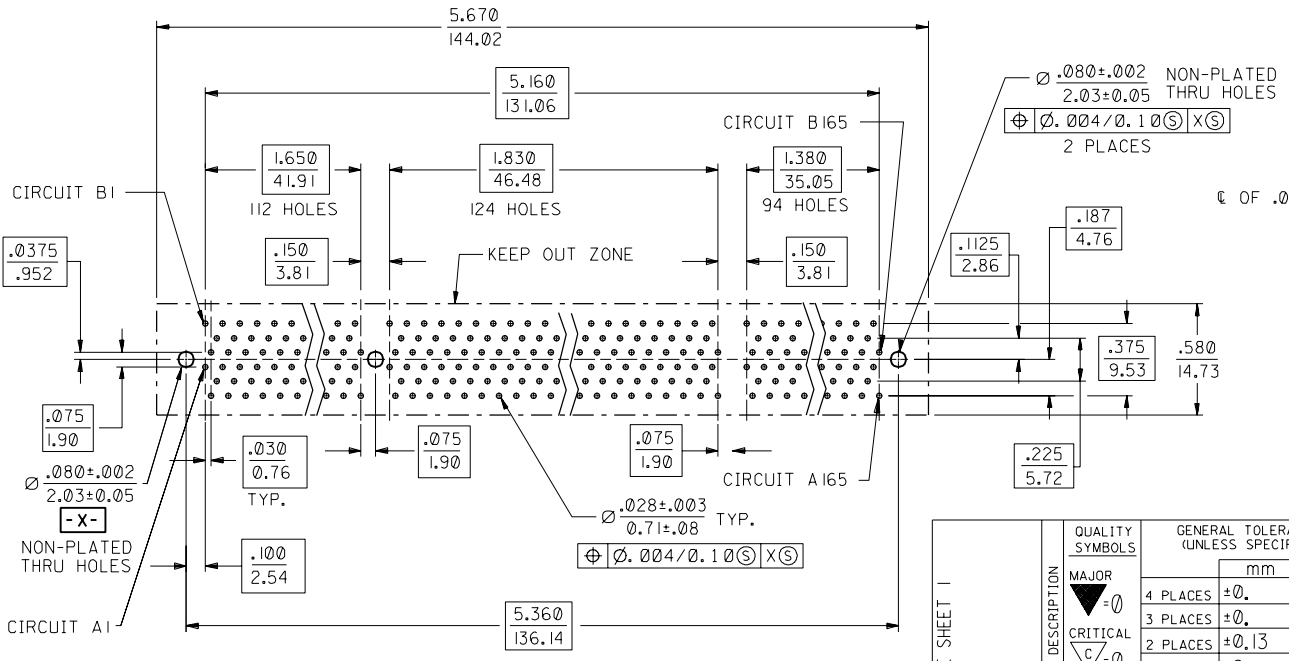
PLATING CHANGE	EC NO. UCP2004-2347
DRWNR: WHITE	04/05/21
CHK: BBARKER	04/05/21
APPR: SMILLER	04/05/21
REV	H

QUALITY SYMBOLS	GENERAL TOLERANCES: (UNLESS SPECIFIED)	SCALE 2 : 1	DESIGN UNITS <input type="checkbox"/> mm <input checked="" type="checkbox"/> INCH
MAJOR $\nabla=0$	mm INCH	DRAWN BY & DATE	NELSON 06/20/97
CRITICAL $\nabla/C=0$	4 PLACES ±0. ±.	CHECKED BY & DATE	NELSON 06/20/97
	3 PLACES ±0. ±.005	APPROVED BY & DATE	FUNCK 06/20/97
	2 PLACES ±0.13 ±.	CAD FILENAME	S7110966.S01
	1 PLACE ±0. ±.	MATERIAL NO.	SEE TABLE
	ANGULAR: ± 1 °	DRAWING NO.	SD-71109-203
	DRAFT WHERE APPLICABLE MUST REMAIN WITHIN DIMENSIONS	SHEET NO.	1 OF 2

DIMENSIONS: <input type="checkbox"/> mm <input checked="" type="checkbox"/> INCH <input type="checkbox"/> mm ONLY		THIRD ANGLE PROJECTION	2 F
TITLE: SALES ASSEMBLY SC330 "HiSpec" CONNECTOR W/PLASTIC PEGS		REVISION	I H
MOLEX INCORPORATED		REVISE ON CAD ONLY	
THIS DRAWING CONTAINS INFORMATION THAT IS PROPRIETARY TO MOLEX INCORPORATED AND SHOULD NOT BE USED WITHOUT WRITTEN PERMISSION.		SIZE	C



RECOMMENDED MODULE BOARD LAYOUT



DETAIL Z
SCALE 10:1

RECOMMENDED PCB HOLE LAYOUT

SEE SHEET 1	REV	DESCRIPTION	QUALITY SYMBOLS	GENERAL TOLERANCES: (UNLESS SPECIFIED)	SCALE 2:1	DESIGN UNITS	THIRD ANGLE PROJECTION	DIMENSIONS:	SHT	REV
			MAJOR	mm	INCH	mm	INCH	mm	INCH	mm
EC NO.	DRWN:	CHK:	APPR:	4 PLACES ±0.	±.	DRAWN BY & DATE	TITLE:	SALES ASSEMBLY		
F				3 PLACES ±0.	±.005	NELSON 06/20/97	SC330 "HiSpec" CONNECTOR			
				2 PLACES ±0.13	±.	NELSON 06/20/97	W/PLASTIC PEGS			
				1 PLACE ±0.	±.	APPROVED BY & DATE	MOLEX INCORPORATED			
				ANGULAR: ± 1°		FUNCK 06/20/97	MATERIAL NO. SEE TABLE			
						CAD FILENAME	DRAWING NO. SD-71109-203			
						S7110966.S02	SHEET NO. 2			
							THIS DRAWING CONTAINS INFORMATION THAT IS PROPRIETARY TO MOLEX INCORPORATED AND SHOULD NOT BE USED WITHOUT WRITTEN PERMISSION.			
							SIZE C			