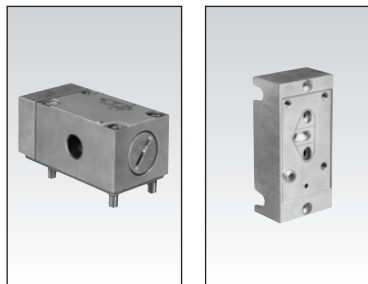


# 3/2 control valve and sub-base



## Part numbers

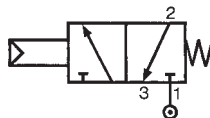
3/2 control valve with pneumatic pilot  
 Sub-base - push-in connection for semi-rigid tubing 5/16" O.D.  
 (Ø 8 mm) (NFE 49100)

81 213 101

81 544 101

1

## Symbol

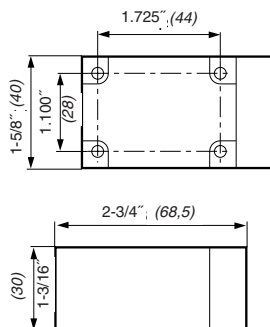


## Characteristics

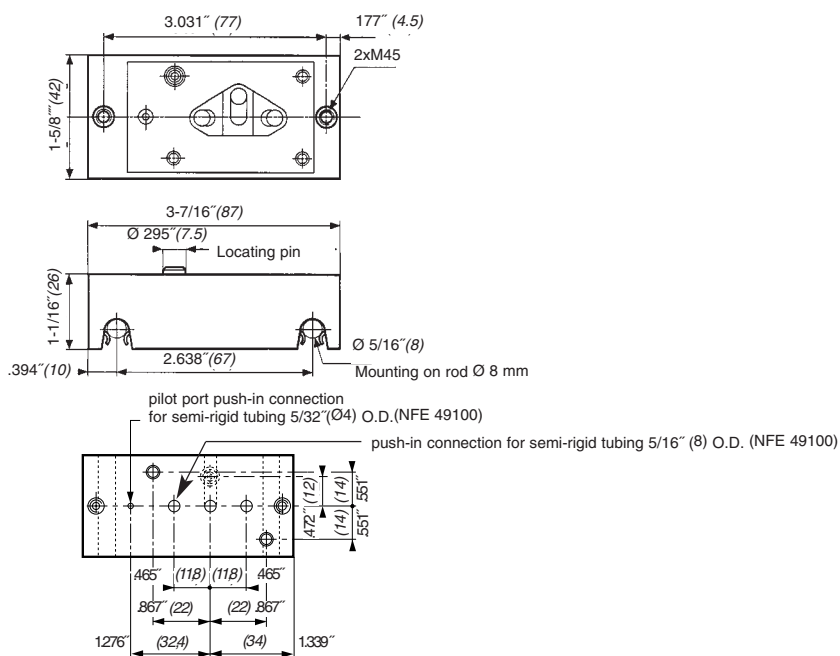
Pilot pressure	psi (bar)	30>120 (2 > 8)	—
Operating pressure	psi (bar)	30>150 (2 > 12)	—
Orifice diameter	inches (mm)	1/4" (6)	—
Flow at 90 psi (6 bars) upstream	cfm (NL/min)	26 (750)	—
Life at 60 psi (4 bars)	cycles	10 million	—
Weight	grams	350	220

## Dimensions

81 213 101



81 544 101



use (metric) dimensions for critical data

Other information	To order, specify :
	<p>Standard products</p> <p><b>1</b> Part number                      Example : 3/2 control valve and accessories - 81 213 101</p>

Products and specifications subject to change without notice.  
 Consult factory for application assistance.