

# SCS



## Static Control Smocks



# PROBLEM

- A grounded wrist strap reliably removes charges from a person's body, but **NOT** from their clothing as non-conductors cannot be grounded.

## SOLUTION: SCS SMOCK GARMENTS



# PURPOSE

- SCS Static Control Smocks are designed to be antistatic, low tribocharging, and create a Faraday Cage effect around the torso and arms of the wearer to protect ESD susceptible items from electrostatic fields generated by charges on the operator's clothing.
- Static Control Smocks are intended to attenuate electrostatic fields that may be present on personnel clothing.
- Smocks meet the requirement for Groundable Static Control Garment System per ANSI/ESD S20.20 required limit of  $< 3.5 \times 10^7$  ohm Rtg tested per ANSI/ESD STM2.1 and ESD TR53.
- Smock connected to person via conductive cuff, and person connected to footwear via conductive tab, and footwear removes charge to ESD flooring.
- Rtg: less than  $3.5 \times 10^7$  ohms



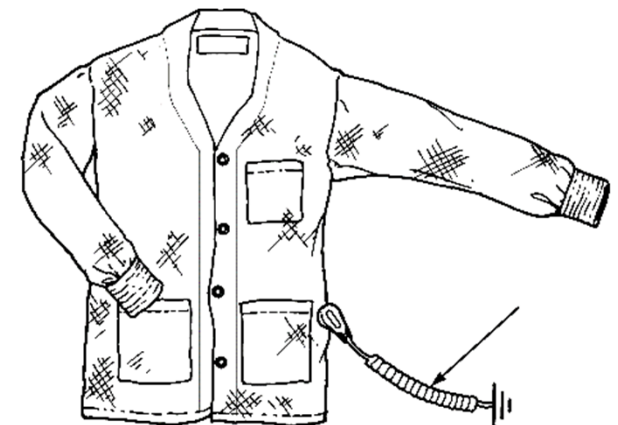
## Use a Smock to Ground Operator

- “After verifying that the garment has electrical conductivity through all panels, the garment should be electrically bonded to the grounding system of the wearer so as not to act as a floating conductor.” [ESD TR20.20]
- Static Control Smocks are a conductor and therefore must be grounded. This is best assured when they are designed to make intimate contact **with the skin of a grounded operator.**



# SCS SMOCKS EFFECTIVELY CONTROL

- Faraday Cage Surrounds Operator Body & Clothing
- Grounding via Patented Hip-To-Cuff Feature
- Hands-Free, No Cord Tugging at Operator's Wrist



# FEATURES

- Texturized Polyester and 9% Carbon Mono-filament Nylon
- Jacket Length
- V-Neck
- 3 Pockets
- ESD Protective Symbol



# FEATURES

- Conductive Elastic Knit Cuffs
  - No wrist strap needed, use coil cord only!



- Tag-Free Neck Label



# MAINTENANCE

- Smocks must be laundered periodically for proper operation.
- SCS recommends Woolite. Liquid detergents are better than dry because there is less caking and frictional wear. Use only non-ionic softeners and detergents when laundering.
- Launder smocks by hand or with a washing machine.
- Launder smocks in cool or warm water, tumble dry with low heat or hang dry.
- **DO NOT USE BLEACH OR FABRIC SOFTENER.**
- The carbon-suffused mono-filament nylon is sensitive to heat and should not be exposed to laundering heat in excess of 120°F.





# WARRANTY

## **2-Year / 100 Launderings Limited Warranty**

- Under normal wearing and recommended washing conditions, SCS smocks will maintain their usefulness and effectiveness for a minimum of 100 washings.



# STANDARD STYLES / OPTIONS

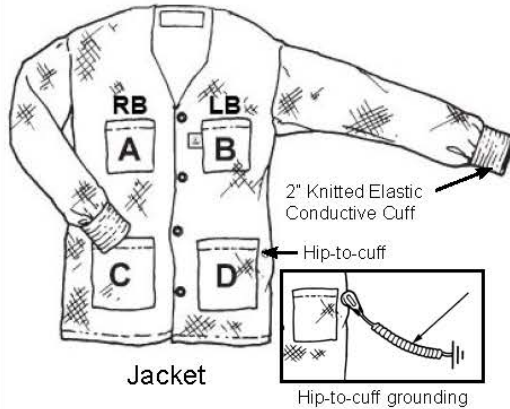
**Smocks are available in the following standard styles and sizes:**

<u>SIZE</u>	<u>BLUE</u>	<u>GRAY</u>	<u>CHEST</u>	<u>SLEEVE</u>
XSmall	770010	770020	30"-32"	33 3/4"
Small	770011	770021	34"-36"	34"
Medium	770012	770022	38"-40"	34 3/8"
Large	770013	770023	42"-44"	35"
XLarge	770014	770024	46"-48"	35 1/2"
2XLarge	770015	770025	50"-52"	35 1/2"
3XLarge	770016*	770026*	54"-56"	37 1/2"
4XLarge	770017*	770027*	58"-60"	36 1/2"
5XLarge	770018*	770028*	62-64"	36"
6XLarge	770019*	770029*	66"-68"	36"

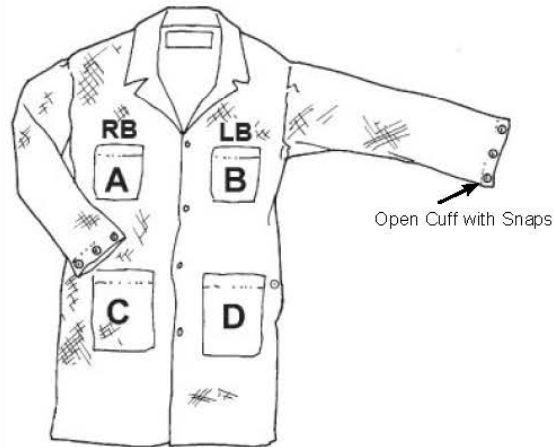
\*Build To Order (BTO) items Note: BTO terms will apply to BTO items



# WE CAN DO CUSTOMS!



Jacket



Lab Coat



2" Knitted Elastic Cuff



Open Cuff with Snaps



Elastic Economy Cuff



Open Cuff



Short Sleeve

**1. Color:**

- Blue
- Burgundy
- Gray
- Pink
- Teal
- White
- Other \_\_\_\_\_

**2. Fabric:**

- Polyester with 9% minimum carbon suffused fibers.
- Other \_\_\_\_\_

**3. Collar:**

- Yes
- No

**4. Cuff and Sleeves:**

- 2" Knitted Elastic Conductive Cuff:** Conductive silver fibers sewn-in. Wrist strap not required.
- Open Cuff with Snaps:** Includes snaps for size adjustment and to attach to 4mm wrist strap. Separate wrist strap required.
- Elastic Economy Cuff:** Cuff with elastic strip sewn in. No snaps. Separate wrist strap required.
- Open Cuff:** No elastic or snaps. Separate wrist strap required.
- Short Sleeve**
- Other \_\_\_\_\_

**5. Hip-to-Cuff:** (for knitted cuff and open cuff w/snap options):

- Yes
- No

Sewn-in conductive strip from Hip-to-cuff (Hip connection of coil cord provides hands free grounding. Removes charges from worker and smock while allowing hands to be free.)

**6. Length:**

- Jacket (Short)
- Lab Coat (Long)

**7. Pockets:**

Quantity: \_\_\_\_\_

Location:

- A
- B
- C
- D

**8. Artwork:**

- Patch
- Sublimation

Additional worksheet available for custom artwork.

SIZE	CHEST
XS	30"-32"
S	34"-36"
M	38"-40"
L	42"-44"
XL	46"-48"
2XL	50"-52"
3XL	54"-56"
4XL	58"-60"
5XL	62"-64"
6XL	66"-68"

**9. Company Name:** \_\_\_\_\_

**Contact:** \_\_\_\_\_

**Signature:** \_\_\_\_\_

Note: Written customer approval of first article or sample is required for manufacturing of custom smocks.

Minimum quantity: 100 (cumulative)

Call us at 919-718-0000 if you have questions.

Special manufactured items are not returnable for credit.

**CUSTOM SMOCK DRAWING Assigned PN** \_\_\_\_\_ **Quote ID#** \_\_\_\_\_



OPPORTUNITY

**Sell the**  
**S**ta**t**ic  
**C**on**t**rol  
**S**olu**t**ion