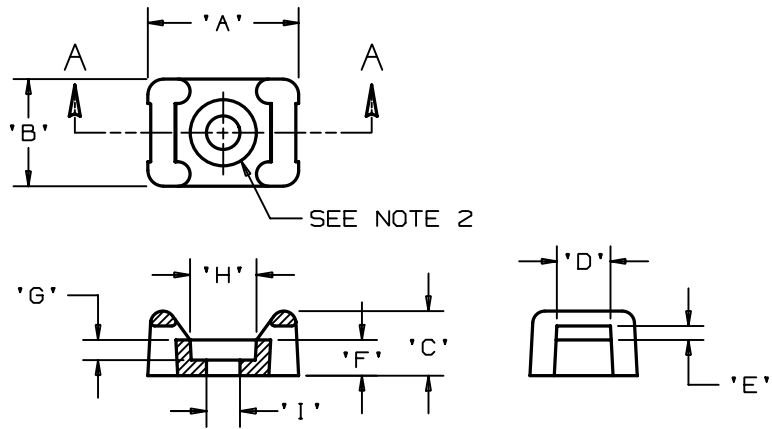


THIS COPY IS PROVIDED ON A RESTRICTED BASIS AND IS NOT TO BE USED IN ANY WAY DETRIMENTAL TO THE INTERESTS OF PANDUIT CORP.

| PANDUIT PART NO.* | RECOMMENDED FASTENER | 'A' | 'B' | 'C' | 'D' ±0.010 ±(0.25) | 'E' +0.020 +(0.51) | 'F' | 'G' 'REF' | 'H' 'REF' | 'I' 'REF' | USE WITH THESE CABLE TIE CROSS SECTIONS | WEIGHT (g) lbs/100 pcs. |
|-------------------|----------------------|------------------|----------------|-----------------|--------------------------|--------------------------|-----------------|-----------------|--------------|--------------|---|----------------------------|
| TM2S8-100 | #8 (M4) SCREW | 0.590 (14.98) | 0.378 (9.6) | 0.271 (6.88) | 0.215 (5.46) | 0.058 (1.5) | 0.152 (3.86) | 0.102 (2.59) | 0.332 | 0.176 | MINIATURE INTERMEDIATE STANDARD | 0.065 (29.5) |



SECTION A-A

- NOTES:
 *1. SEE CURRENT PRICE SHEET FOR PART NUMBER SUFFIX DESIGNATION FOR PACKAGE SIZE.
 2. HOLE DIMENSIONS SHOULD ACCOMMODATE SPECIFIED RECOMMENDED FASTENER.

DIMENSIONS IN BRACKETS ARE METRIC [mm]

CAD FILENAME/LAYERS G00239CJ_PB_TM2S8_04



TINLEY PARK, ILLINOIS

TIE MOUNT - TM2S8-100

UNLESS OTHERWISE SPECIFIED, DIMENSIONAL TOLERANCES ARE:
 (.X) ±0.05 [1.3] (.XXX) ±0.020 (0.51)
 (.XX) ± ANGLES ± 5°

UNLESS OTHERWISE SPECIFIED, ALL DIMENSIONS ARE GIVEN IN INCHES, THIRD ANGLE PROJECTION.

DRAWN BY MDE
 DATE 3-07-96
 CHK'D

MAT'L: WEATHER RESISTANT POLYPROPYLENE

SCALE NONE

DRAWING NO. GB0239CJ
 DWG SIZE A

| REV | DATE | BY | CHK | DESCRIPTION | ECN | R | CUST | SUP |
|-----|----------|------|-----|--|----------|---|------|-----|
| 4 | 1-15-02 | LGG | | ADDED DIM 'H' & 'I' TO TABLE ADDED 'REF' TO DIM 'G' | GB0239CJ | 4 | | |
| 3 | 12-21-00 | CGSM | | REMOVED DIMS 'G' AND 'J', MADE DIM 'H' INTO 'G', ADDED NOTE 2 | GB0239CJ | 3 | | |
| 2 | 11-15-99 | JAD | | Revised dimension A,C,D,F,H,& J | GB0239CJ | 2 | | |
| 1 | 6-12-97 | JAD | | REVISED DATE IN TITLE BLOCK | GB0239CJ | 1 | | |
| R | 03-07-96 | MDE | | INITIAL RELEASE | GB0239CJ | R | | |